

Vector // MicaSense RedEdge-P - User Installation

Parts Used:

M3 x 8 mm FH Screw (4x)
M3 Nyloc Nut (4x)
PCS Lock Ring Subassembly (1x)
Downwelling Sensor Vector Mount Assembly, (1x)
DLS2 Harness (1x)

Installation:

Remove the top mounting plate.

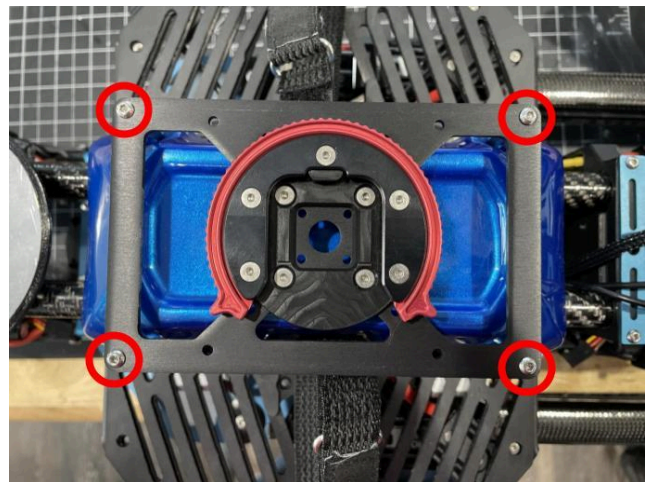
● Using **4x M3 x 8 mm FH screws** and **M3 nyloc nuts**, secure the PCS lock ring assembly to the top mounting plate.

NOTE: Do **NOT** use Loctite at this step.

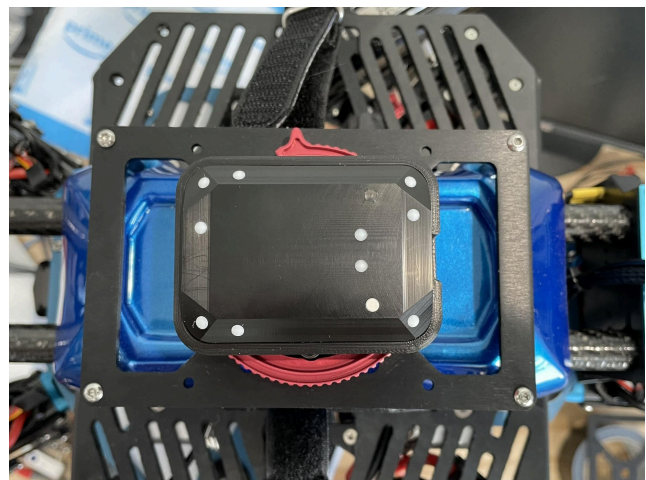


Position the top plate on the standoffs over the body with the PCS assembly facing the drone's left side.

● Apply a **SMALL** amount of **Loctite** to **4x M3 x 8 mm BH screws** and secure the top plate to the Vector.

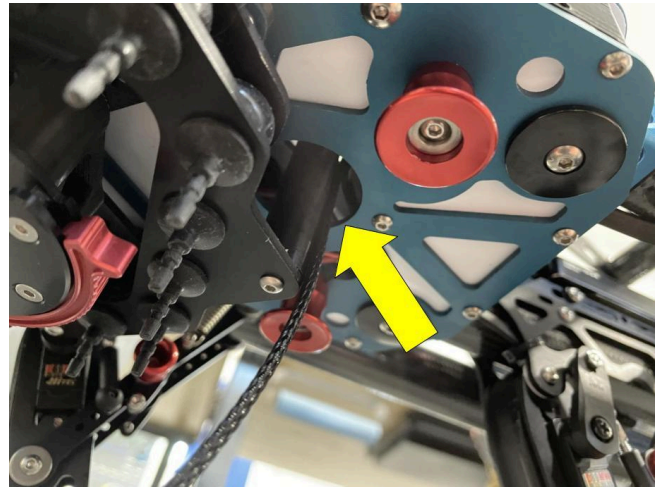


Install the Downwelling sensor into the PCS lock ring and twist the ring to secure.

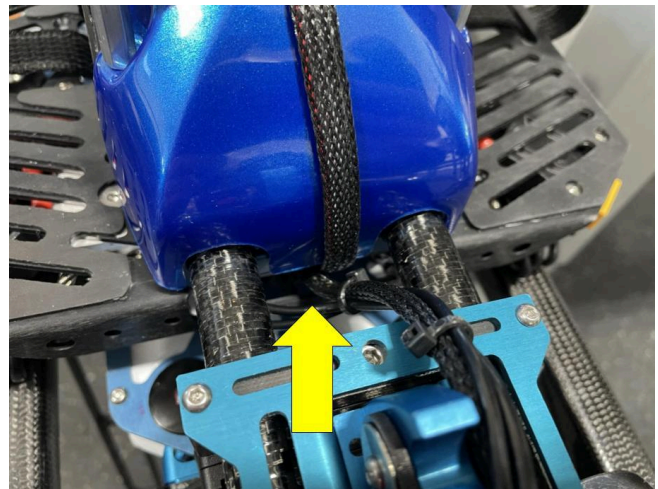


● Route the DLS2 harness up through the rear Deck post pass through hole in the bottom of the Vector.

Caution: There are many wires that pass through this area. Ensure none of the wires are damaged or strained as the DLS2 harness is routed through.



● Route the DLS2 harness through the hole in the back of the Deck. This is the same hole the GPS puck wires are routed through.



Route the DLS2 harness through the top plate and plug it into the DLS2.

Install the camera on the PCS on the underside of the aircraft and connect the DLS2 harness to the “DLS” port.

